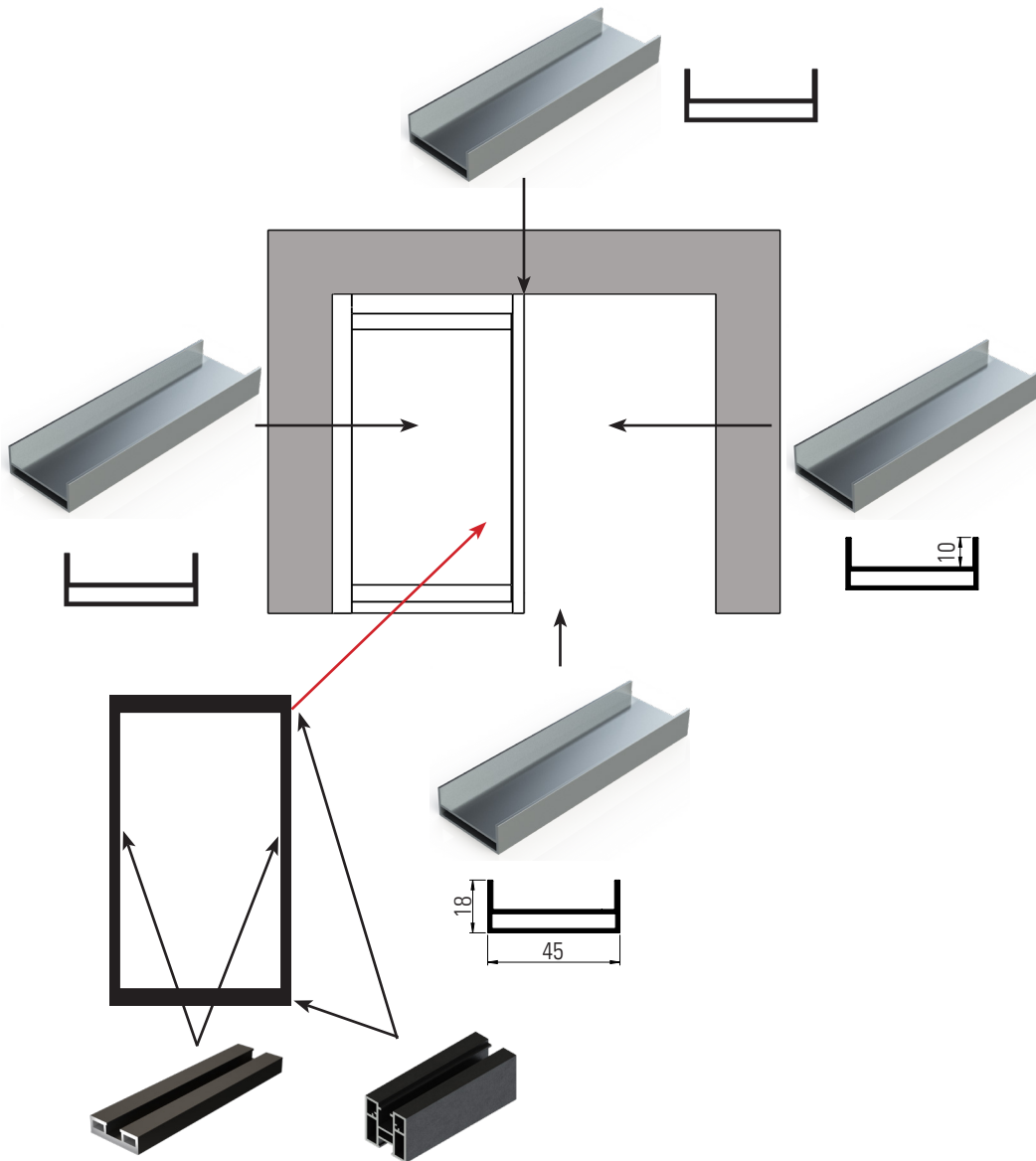


INSTRUCCIONES DE INSTALACIÓN DE FIJOS PA

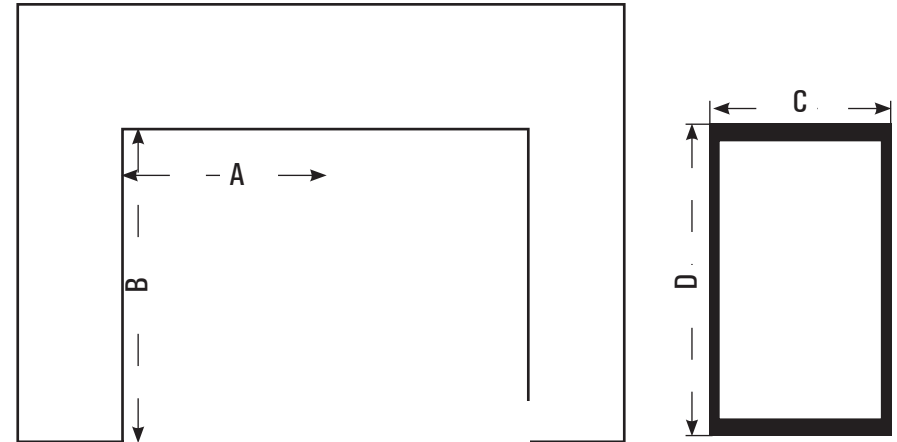
FIX PA STRUCTURE ASSEMBLY INSTRUCTIONS

EL FIJO ES MENOR QUE EL 50% DEL ANCHO DE LUZ
FIX PA STRUCTURE IS 50% SHORTER THAN OPENING WIDTH



INSTALACION DE FIJOS

FIX STRUCTURE ASSEMBLY INSTRUCTIONS



A=Ancho de hueco libre / Opening Width **C=Ancho de fijo / Fix structure Width**
B= Alto de hueco libre / Opening Height **D= Alto de fijo / Fix structure Height**

DESGLOSE DE MEDIDAS DE MARCO DE FIJO:

FIX PA STRUCTURE MEASURES

 **Perfiles verticales= B**
Vertical profiles= Open height

 **Perfiles horizontales= A - 36**
Horizontal lower profile = A-36mm

DESGLOSE DE MEDIDAS DEL SISTEMA DE FIJOS PA:

FIX PA STRUCTURE MEASURES

D = B - 22mm

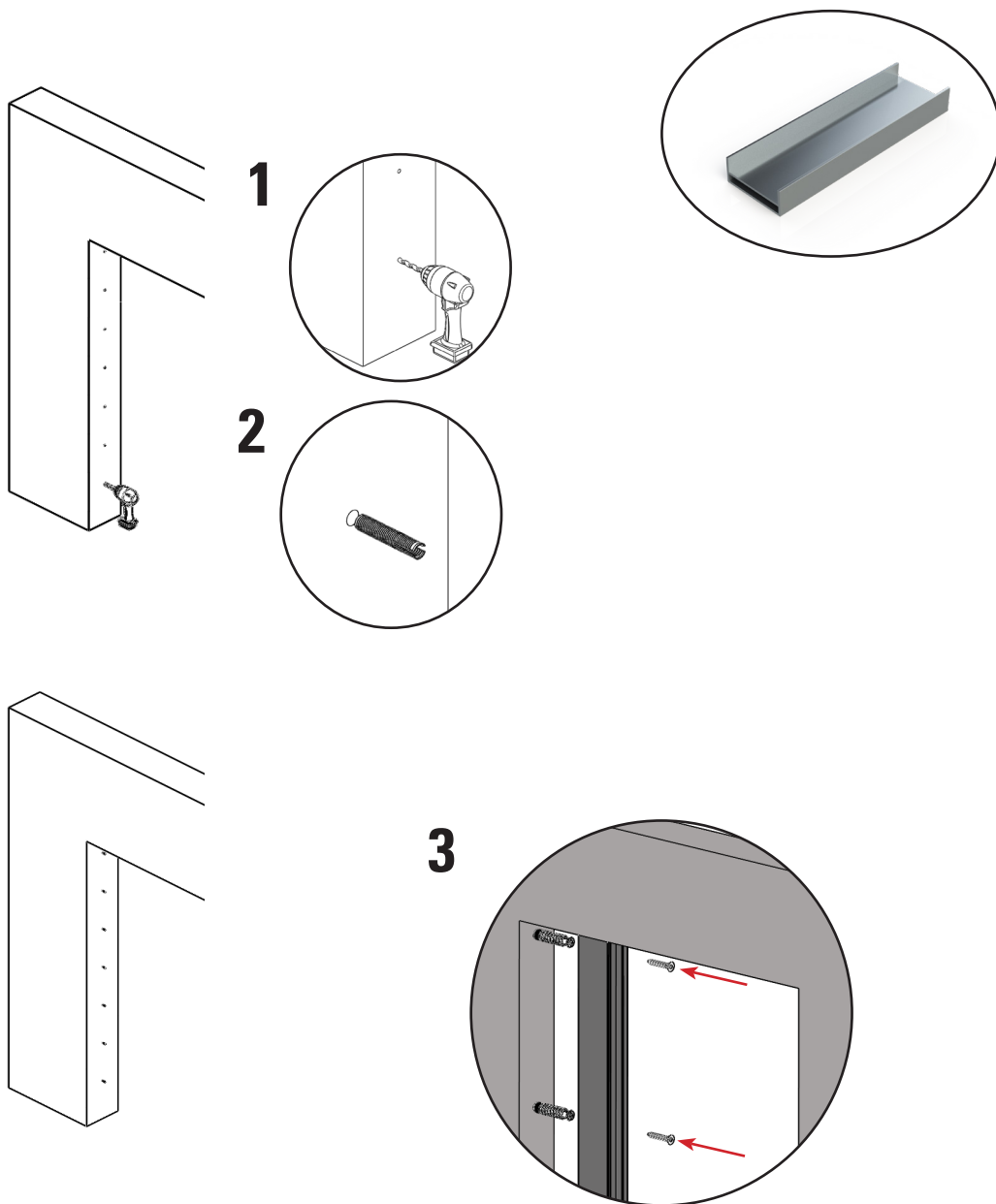
D = B - 22mm

C = A - 22mm

C = A - 22mm

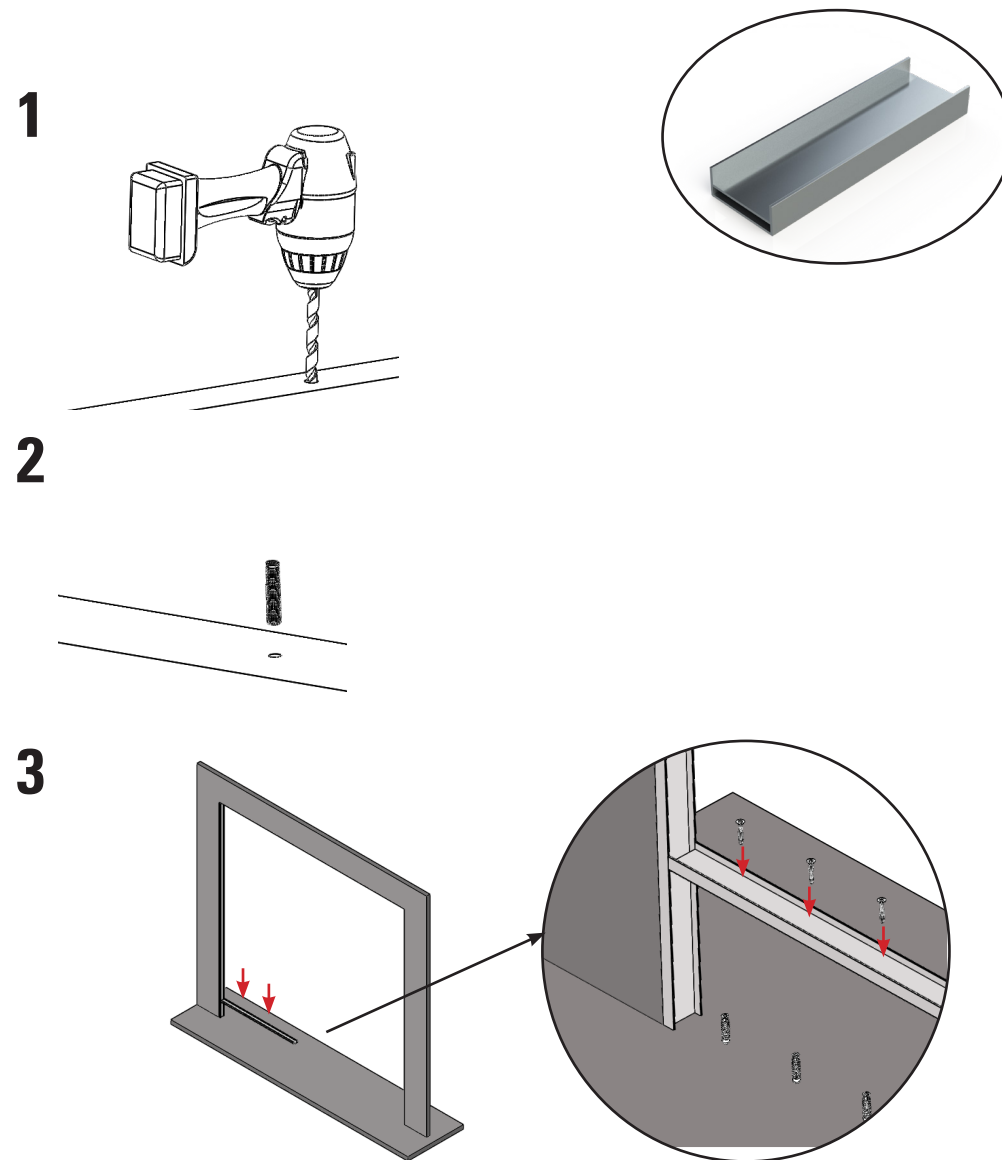
PASO 1 TALADRAR LA PARED E INSTALAR LOS TACOS DE SUJECCIÓN PARA FIJAR EL PERFIL

STEP 1 DRILL THE WALL, PUT THE FASTENING PLUGS IN ORDER TO FIX VERTICAL PROFILE



PASO 3 FIJAR EL PERFIL EN U INFERIOR A SUELO

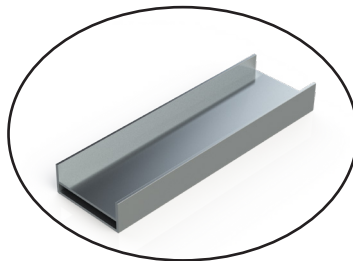
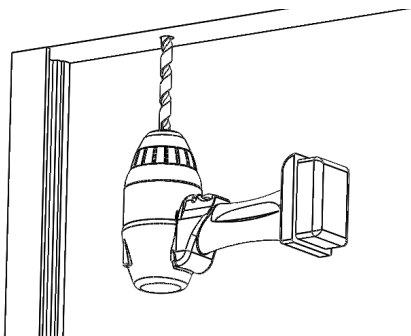
STEP 3 FIX LOWER FIX THE BASE PROFILE TO THE GROUND



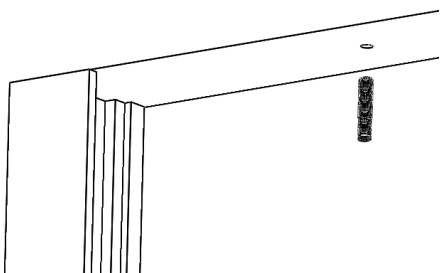
PASO 4 FIJAR EL PERFIL BASE FIJO PA SUPERIOR A TECHO

STEP 4 FIX BASE PROFILE TO THE CEILING

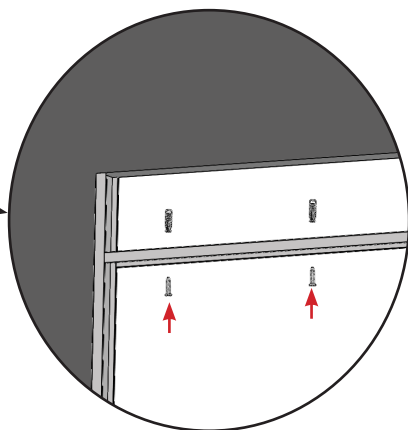
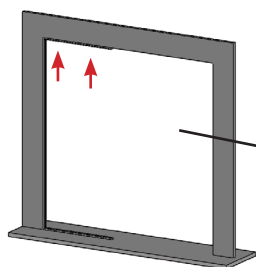
1



2

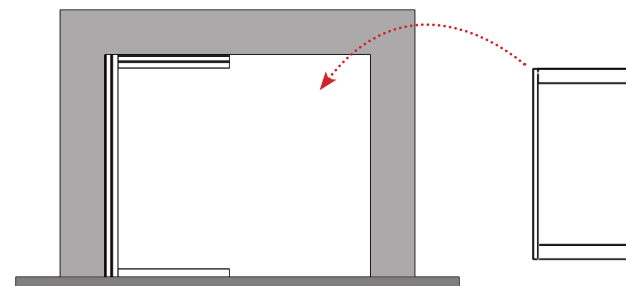


3

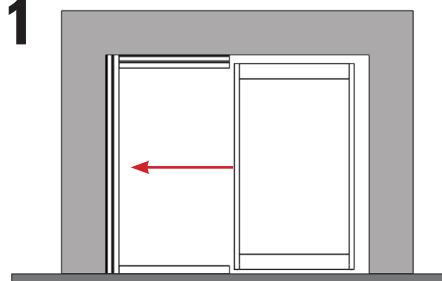


PASO 5 METER PUERTA PA EN LA ESTRUCTURA FIJADA

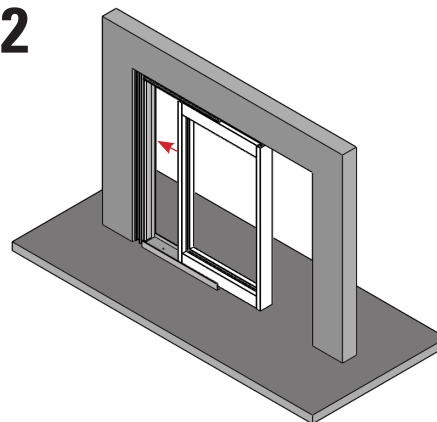
STEP 5 SLIDE PA DOOR INTO THE FIX STRUCTURE



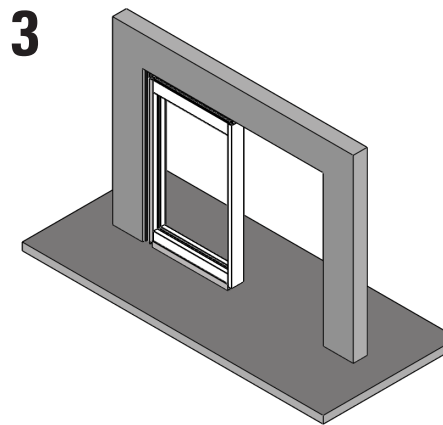
1



2



3

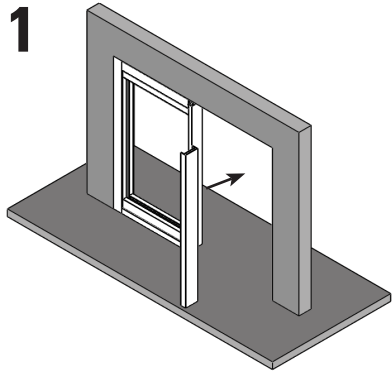


ADINOR

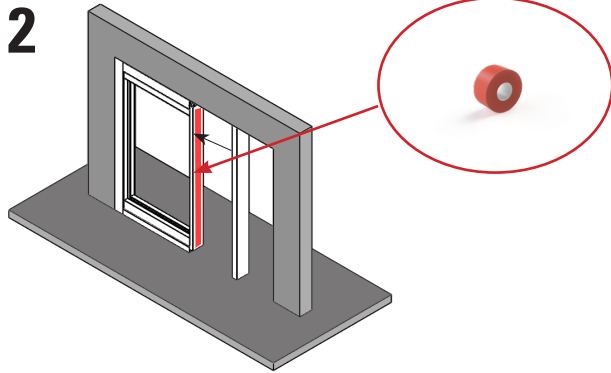
PASO 4 PEGAR EL PERFIL BASE A LATERAL DE LA PUERTA PA INTRODUCIDA.

STEP 4 STICK LATERAL BASE PROFILE TO THE VERTICAL PA DOOR PROFILE.

1



2



3

